



AL-302.1

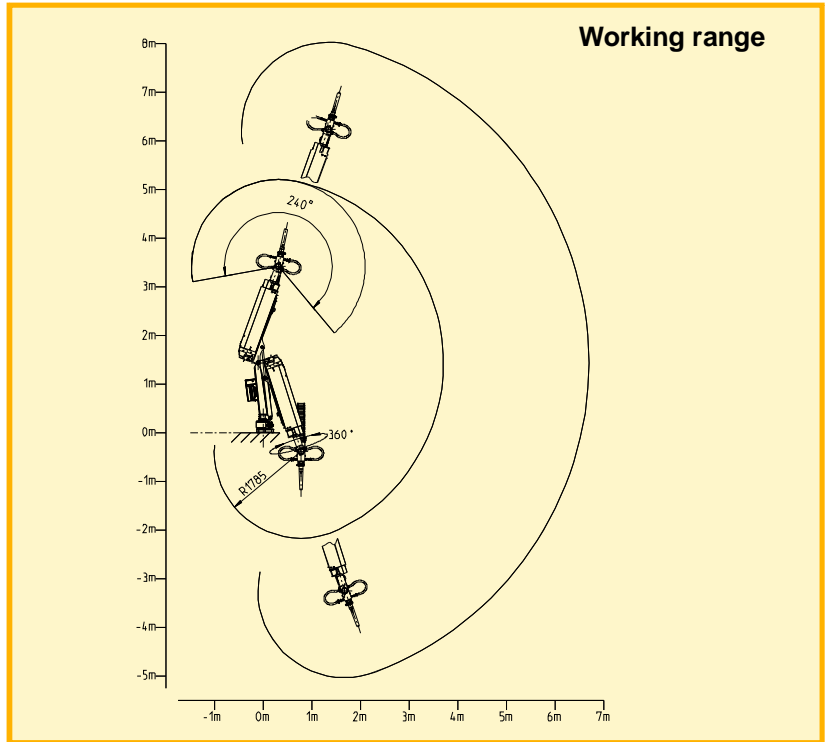
Telescope Spraying Arm



For mining and small tunnels
Modular concept
Air, electric, diesel driven
Simple mounting onto carriers

Dimensions:

Transport length:	~ 2,25 m
Transport width:	~ 0,95 m
Transport height:	~ 1,95 m
Weight:	~ 580 kg
Max. spraying height:	8 m
Max. length:	7 m
Min. length:	2 m
Stroke arm:l	3 m
Spraying angle:	240 °
Nozzle angle:	360 °
Remote conrol:	electric (cable 15m)



The telescope spraying arm AL-302 has been designed specially for mines, small galleries and excavations.

Owing to its simple and rigid construction it is most suitable for mounting onto different carriers.

Hydraulic unit	Electric	Air motor
Oil pressure:	210 bar	210 bar
Oil quantity:	28 l/min	23 l/min
Motor output:	7,5 kW	--
Voltage / air consumption:	380-480V 50/60 cc	4 Nm ³ /min.



Picture on the left: Mounting of the AL-302 onto a Putzmeister carrier

Picture on the right: AL-302.1 mounting onto different carriers possible.

Technical and design modifications remain reserved at all times. Technical properties have been achieved under theoretical and normal conditions. Please consult the respective machine manual for all matters related to operations and maintenance.

For us a matter of principle



Sika Schweiz AG Aliva equipment
 CH-8048 Zürich / Switzerland
 Phone ++ 41 58 436 4040 www.sika.com
 Fax ++ 41 58 436 4140 aliva_equipment@ch.sika.com

Your local dealer:



Authorized Distributor:
 Thiessen Team USA
 1840 Sharps Access Rd
 Elko, NV 89801
 Ph: (775) 777-1205 Fax: (775) 777-1215
www.thiessenteam.com