

## At A Glance

### Operating Weights: lb. (kg.)

Model	Boom only	Complete System*
MRH16.....	12,000 (5443)	17,894 (8115) – 22,300 (10113)
MRH20.....	12,400 (5624)	18,294 (8297) – 21,060 (9551)
MRH2025...	12,700 (5760)	18,594 (8433) – 20,700 (9388)
MRH25.....	13,200 (5986)	19,194 (8705) – 21,300 (9660)

\* complete system from smallest to largest appropriate hammer, including electric-hydraulic power pack and controls

### Dimensions: in (mm)

Model	Length x Width*	Working length**	Base (L x W)
MRH16.....	256 x 50 (6500 x 1270)	187.8 (4771)	62.75 x 50.0 (1594 x 1270)
MRH20.....	302 x 50 (7673 x 1270)	234.2 (5949)	62.75 x 50.0 (1594 x 1270)
MRH2025..	338 x 50 (8584 x 1270)	270.0 (6858)	62.75 x 50.0 (1594 x 1270)
MRH25.....	357 x 50 (9068 x 1270)	289.1 (7342)	62.75 x 50.0 (1594 x 1270)

\* less hammer

\*\* swing pivot to dipperstick / hammer mounting pin (on-center) dimension

## Operating Parameters

Model	Hammer Model Range: ft-lb (J)
MRH16.....	BX20: 2000 (2711) thru BXR85: 8500 (11524)
MRH20.....	BX20: 2000 (2711) thru BXR65: 6500 (8812)
MRH2025...	BX20: 2000 (2711) thru BXR50: 5000 (6779)
MRH25.....	BX20: 2000 (2711) thru BXR50: 5000 (6779)

# MRH SERIES

## Rockbreaker System



## FEATURES & BENEFITS

High strength steel (bent, 4-plate) construction  
65 ksi tensile strength; 50 ksi yield strength for longer service life

Reinforced pivot and mounting pin joints from improved durability

Hardened steel bushings in pivot joints and larger diameter pivot pins provide reduced bearing pressure and increased service life

Thicker pedestal base plate – 1.5" (38 mm)

Pedestal mounting bolt pattern matches TM-H & X series for ease and reduced expense of replacement

Increased cross sectional strength of boom and dipper where high stress is realized

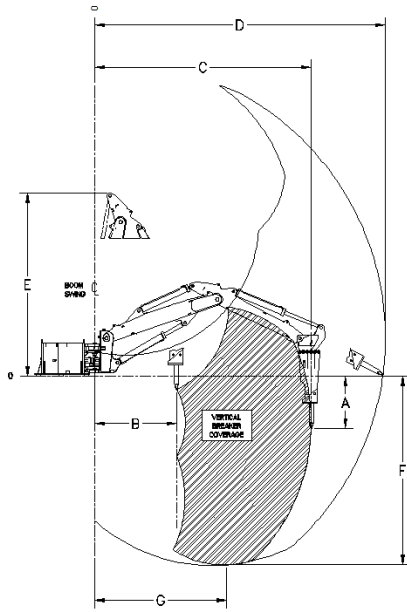
Common cylinder for hoist (lift), crowd (stick) and curl (tilt) functions

Tilt & Lift valve stand for improved serviceability

Legend: ● Standard ▲ Optional

# MRH Series Pedestal Rock Breaker System

## BOOM & HAMMER COMBINATIONS



### Hammer Specifications

Hammer Models:	BX20	BX30	BX40	BXR50	BXR65	BXR85
<b>Impact Energy Class:</b> ft-lb (J)	2000 (2711)	3000 (4067)	4000 (5423)	5000 (6779)	6500 (8812)	8500 (11524)
<b>Operating Weight:</b> lb. (kg.)	2094 (950)	2866 (1300)	3749 (1700)	3880 (1760)	4563 (2070)	6463 (2931)
<b>Working Length</b> in. (mm)	90.4 (2295)	99.8 (2535)	108.8 (2764)	107.0 (2718)	110.8 (2813)	127.6 (3240)
<b>Tool Diameter</b> in. (mm)	4.2 (105)	4.8 (120)	5.1 (135)	5.5 (140)	5.9 (150)	6.3 (160)
<b>Operating Flow</b> gpm (lpm)	24-29 (90-100)	27-37 (100-140)	29-42 (110-160)	38-54 (144-204)	42-60 (158-227)	52-75 (197-284)
<b>Operating Pressure</b> psi (bar)	1740-2320 (120-160)	1740-2465 (120-170)	1885-2465 (120-170)	2180-2760 (150-190)	2180-2760 (150-190)	2180-2760 (150-190)
<b>Impact Frequency</b> bpm (short stroke)	350-600	400-600	380-600	374-611 (514-840)	341-561 (454-746)	328-544 (436-723)
<b>Sound / Distance*</b> at 85 dB(A): ft. (m)	100 (30)	121 (37)	135 (41)	142 (43)	146 (44)	150 (45)

(\*): BX & BXR hammers are furnished with a sound suppressing housing for superior noise attenuation. Noise levels may vary due to site conditions and barriers.

### Coverage

	MRH16						MRH20						MRH2025				MRH25			
--	-------	--	--	--	--	--	-------	--	--	--	--	--	---------	--	--	--	-------	--	--	--

ft. (m)	BX20	BX30	BX40	BXR50	BXR65	BXR85	BX20	BX30	BX40	BXR50	BXR65	BX20	BX30	BX40	BXR50	BX20	BX30	BX40	BXR50
<b>A</b>	4'-6" (1.4)	5'-4" (1.6)	6'-1" (1.9)	5'-11" (1.8)	6'-3" (1.9)	7'-7" (2.3)	5'-0" (1.5)	5'-10" (1.8)	6'-7" (2.0)	6'-5" (1.9)	8'-1" (2.5)	5'-2" (1.6)	6'-0" (1.8)	6'-9" (2.1)	6'-7" (2.0)	5'-2" (1.6)	6'-0" (1.8)	6'-9" (2.1)	6'-7" (2.0)
<b>B</b>	7'-4" (2.2)	7'-4" (2.2)	7'-4" (2.2)	7'-4" (2.2)	7'-4" (2.2)	7'-4" (2.2)	7'-10" (2.4)	7'-10" (2.4)	7'-10" (2.4)	7'-10" (2.4)	7'-10" (2.4)	7'-0" (2.1)	7'-0" (2.1)	7'-0" (2.1)	7'-0" (2.1)	7'-0" (2.1)	7'-0" (2.1)	7'-0" (2.1)	7'-0" (2.1)
<b>C</b>	16'-10" (5.1)	16'-10" (5.1)	16'-10" (5.1)	16'-10" (5.1)	16'-10" (5.1)	16'-10" (5.1)	20'-6" (6.2)	20'-6" (6.2)	20'-6" (6.2)	20'-6" (6.2)	20'-6" (6.2)	22'-0" (6.7)	22'-0" (6.7)	22'-0" (6.7)	22'-0" (6.7)	25'-0" (7.6)	25'-0" (7.6)	25'-0" (7.6)	25'-0" (7.6)
<b>D</b>	23'-10" (7.2)	24'-4" (7.4)	24'-10" (7.6)	24'-8" (7.5)	25'-0" (7.6)	26'-2" (8.0)	27'-10" (8.5)	28'-4" (8.6)	28'-10" (8.8)	28'-8" (8.7)	29'-0" (8.9)	29'-6" (9.0)	30'-0" (9.1)	30'-6" (9.3)	30'-4" (9.2)	32'-6" (9.9)	33'-0" (10.0)	33'-6" (10.2)	33'-4" (10.1)
<b>E</b>	15'-10" (4.8)	15'-10" (4.8)	15'-10" (4.8)	15'-10" (4.8)	15'-10" (4.8)	15'-10" (4.8)	17'-4" (5.3)	17'-4" (5.3)	17'-4" (5.3)	17'-4" (5.3)	17'-4" (5.3)	17'-4" (5.3)	17'-4" (5.3)	17'-4" (5.3)	17'-4" (5.3)	20'-2" (6.1)	20'-2" (6.1)	20'-2" (6.1)	20'-2" (6.1)
<b>F</b>	15'-0" (4.6)	15'-8" (4.8)	16'-7" (4.9)	16'-5" (5.0)	16'-9" (5.1)	18'-1" (5.5)	17'-0" (5.2)	17'-10" (5.4)	18'-7" (5.7)	18'-5" (5.6)	19'-1" (5.8)	20'-10" (6.3)	21'-8" (6.6)	22'-5" (6.8)	22'-3" (6.7)	21'-8" (6.6)	22'-6" (6.9)	23'-3" (7.1)	23'-1" (7.0)
<b>G</b>	10'-9" (3.3)	10'-9" (3.3)	10'-9" (3.3)	10'-9" (3.3)	10'-9" (3.3)	10'-9" (3.3)	12'-4" (3.8)	12'-4" (3.8)	12'-4" (3.8)	12'-4" (3.8)	12'-4" (3.8)	13'-3" (4.0)	13'-3" (4.0)	13'-3" (4.0)	13'-3" (4.0)	15'-0" (4.6)	15'-0" (4.6)	15'-0" (4.6)	15'-0" (4.6)

### Tool Selection (for aggregate production and mining)



- **Blunt** is used for boulder and oversize breaking; tool impact delivers the stress wave generated by the hammer causing the material to fracture; excellent wear resistance



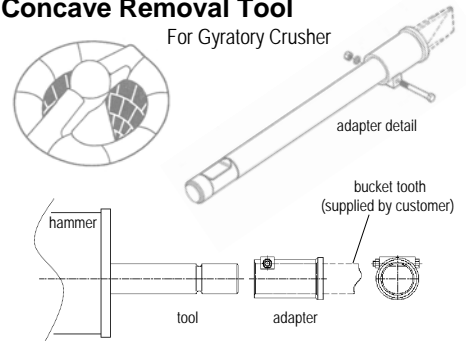
- **Chisel** is suitable for slabby, angular material; tool provides wedge effect impact and good penetration



- **Moil** is ideal for softer, abrasive material where high penetration is needed; similar to the blunt it results in less torque in the front head

### Concave Removal Tool

For Gyratory Crusher



Note: Adapter tool length is 72 in. (1829 mm) long plus adapter and tooth

# MRH Series Pedestal Rock Breaker System

## HAMMER SELECTION GUIDE FOR BLASTED MATERIAL\*

### IMPERIAL MEASUREMENTS

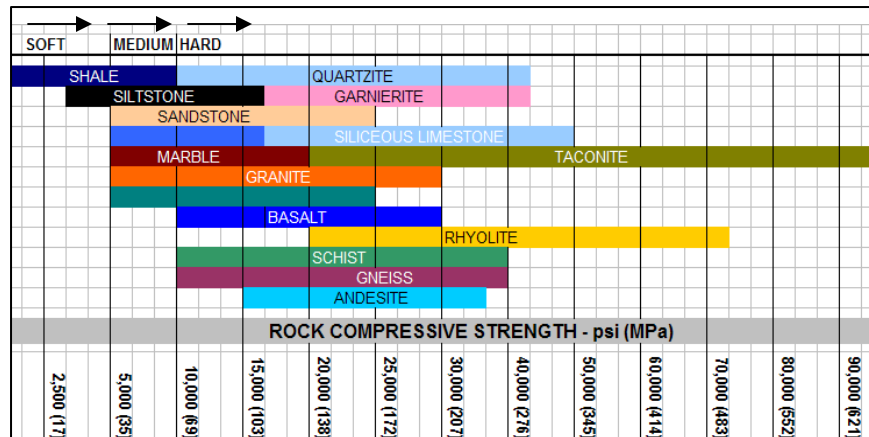
Material Hardness Compressive Strength	BOULDER SIZE - yd <sup>3</sup>						
	< 0.5 yd <sup>3</sup>	0.5 – 1.0 yd <sup>3</sup>	1.0 – 2.0 yd <sup>3</sup>	2.0 – 4.0 yd <sup>3</sup>	4.0 – 6.0 yd <sup>3</sup>	6.0 – 8.0 yd <sup>3</sup>	8.0 – 10 yd <sup>3</sup>
Very Hard..... 35-45 ksi examples: gneiss, schist, andesite, gold ore	2,000 ft-lb	3,000 ft-lb	4,000 ft-lb	5,000 ft-lb	6,500 ft-lb	8,500 ft-lb	10,000 ft-lb
Hard..... 25-35 ksi examples: siliceous limestone, basalt, granite, trap rock, copper ore	1,500 ft-lb	2,000 ft-lb	3,000 ft-lb	4,000 ft-lb	5,000 ft-lb	6,500 ft-lb	8,500 ft-lb
Medium Hard... 15-25 ksi examples: dolomite, siliceous and dolomitic limestone	1,000 ft-lb	1,500 ft-lb	2,000 ft-lb	3,000 ft-lb	4,000 ft-lb	5,000 ft-lb	6,500 ft-lb
Soft..... 10-15 ksi examples: soft limestone, gypsum	800 ft-lb	1,000 ft-lb	1,500 ft-lb	2,000 ft-lb			

(\*): 1 ksi = 1,000 psi (lbs. / in.<sup>2</sup>), ranges provided due to possible layer presence and density variance.

### METRIC MEASUREMENTS

Material Hardness Compressive Strength	BOULDER SIZE - m <sup>3</sup>						
	< 0.5 m <sup>3</sup>	0.5 – 1.0 m <sup>3</sup>	1.0 – 2.0 m <sup>3</sup>	2.0 – 4.0 m <sup>3</sup>	4.0 – 6.0 m <sup>3</sup>	6.0 – 8.0 m <sup>3</sup>	8.0 – 10.0 m <sup>3</sup>
Very Hard..... 241-310 MPa examples: gneiss, schist, andesite, gold ore	3,000 ft-lb	4,000 ft-lb	5,000 ft-lb	6,500 ft-lb	8,500 ft-lb	10,000 ft-lb	12,000 ft-lb
Hard..... 172-241 MPa examples: siliceous limestone, basalt, granite, trap rock, copper ore	2,000 ft-lb	3,000 ft-lb	4,000 ft-lb	5,000 ft-lb	6,500 ft-lb	8,500 ft-lb	10,000 ft-lb
Medium Hard.. 103-172 MPa examples: dolomite, siliceous and dolomitic limestone	1,500 ft-lb	2,000 ft-lb	3,000 ft-lb	4,000 ft-lb	5,000 ft-lb	6,500 ft-lb	8,500 ft-lb
Soft..... 69-103 MPa examples: soft limestone, gypsum	1,000 ft-lb	1,500 ft-lb	2,000 ft-lb	3,000 ft-lb			

(\*): 1 MPa = 145 psi (lbs. / in.<sup>2</sup>), ranges provided due to possible layer presence and variance.



# MRH Series Pedestal Rock Breaker System

## DESIGN and ENGINEERING DATA

### Design Data: in (mm)

- Mounting bolt size: 1.5 in. dia. (ø 38) x7 thru holes @ 1.75 in. dia. (ø 44)
- Mounting bolt torque: 1,450 ft-lb (1,966 N-M)
- Swing Angle: 170° (-85° / +85°) ●

### Pivot Pin Data: in. (ø mm)

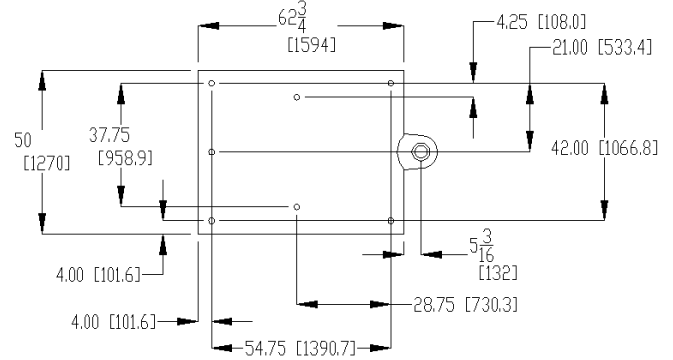
- 3.5 (ø 89): Pedestal Base-to-Swing Post:
- 4.0 (ø 102) Swing Post-to-Hoist Boom; Hoist Boom-to-Dipperstick (Jib)
- 3.0 (ø 76): Hammer Mounting

### Cylinder data: Bore ø / Rod ø / Stroke

- Swing (slew): 5.0 / 2.75 / 20.0 (127 / 70 / 508)
- Hoist (lift): 6.0 / 3.50 / 48.5 (152 / 89 / 1232)
- Stick (crowd): 6.0 / 3.50 / 48.5 (152 / 89 / 1232)
- Tilt (curl): 6.0 / 3.50 / 48.5 (152 / 89 / 1232)

### Cylinder mounting pins

- 2.5 (63)
- 3.0 (76)
- 3.0 (76)
- 3.0 (76)



Pedestal Base Dimension: MRH16 - MRH20 - MRH2025 - MRH25

### Engineering Data: Loads and Moments

#### Imperial

#### Static Overturning

#### Moments: ft-lb (+/-)

MH\*: 272,058 / 0  
MV: 29,356 / 29,356  
MS\*: 272,058 / 272,058

#### Loads: lbs. (+/-)

FS\*: 10,105 / 10,105  
FV: 0 / 23,363  
FH\*: 10,105 / 10,105

#### Dynamic Overturning

#### Moments: ft-lb (+/-)

MH: 544,116 / 0  
MV: 58712 / 58712  
MS: 544,116 / 544,116

Swing Torque: 29,500 ft-lb

#### Metric

#### Static Overturning

#### Moments: kN-M (+/-)

MH\*: 369 / 0  
MV: 40 / 40  
MS\*: 369 / 369

#### Loads: kN (+/-)

FS\*: 449 / 449  
FV: 0 / 1,039  
FH\*: 449 / 449

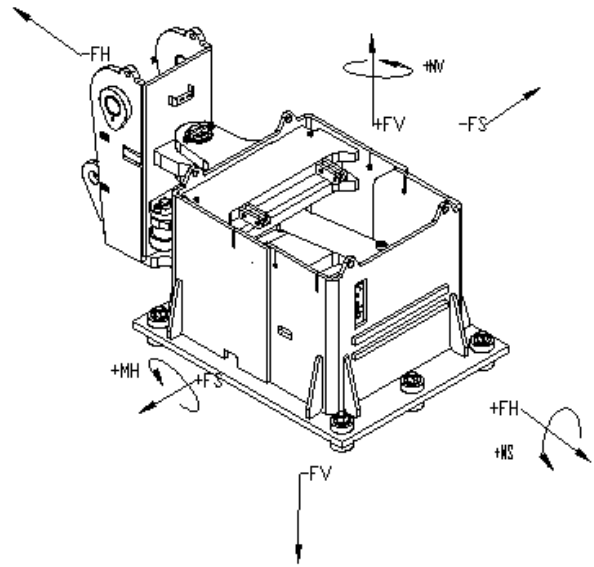
#### Dynamic Overturning

#### Moments: kN-M (+/-)

MH: 738 / 0  
MV: 80 / 80  
MS: 738 / 738

Swing Torque: 40 kN-M

(\*): FS or FH and MH or MS are swing function results and do not happen simultaneously



MRH16 - MRH20 - MRH2025 - MRH25

### Cross Sectional Data: Section Height x Width - in (mm)

	Hoist / Inner Boom	Dipperstick / Outer (Jib) Boom
MRH16.....	18.4 x 15.5 (468 x 394)	24.3 x 11.5 (616 x 292)
MRH20.....	18.4 x 15.5 (468 x 394)	25.6 x 11.5 (649 x 292)
MRH2025.....	18.4 x 15.5 (468 x 394)	29.4 x 11.5 (748 x 292)
MRH25.....	18.4 x 15.5 (468 x 394)	29.4 x 11.5 (748 x 292)

### Lifting Capacities: lb. (kg.)

MRH16.....	10,829 (4922)
MRH20.....	7,750 (3523)
MRH2025.....	6,500 (2948)
MRH25.....	5,250 (2386)

Calculated at full extension, value increases closer to the swing post

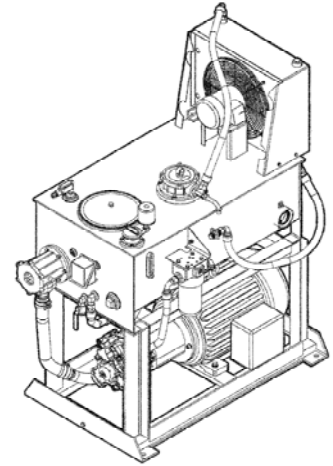


# MRH Series Pedestal Rock Breaker System

## HYDRAULIC and ELECTRICAL SYSTEMS

### Power Pack Specifications

Power Pack (PP) Model (Reservoir size - Hp)	PP100-50	PP100-60	PP100-100	PP100-100	PP100-100	PP100-125
Matched w/ Hammer Model	BX20	BX30	BX40	BXR50	BXR65	BXR85
Horsepower (kW)	50 (37)	60 (45)	100 (75)	100 (75)	100 (75)	125 (93)
Operating Weight: (w/o oil) lb. (kg.)	2000 (910)	2300 (1045)	2400 (1090)	2400 (1090)	2400 (1090)	3000 (1364)
Dimensions: L x W x H in. (mm)	66 x 36 x 60 (1676 x 914 x 1524)	66 x 36 x 81 (1676 x 914 x 2057)	66 x 36 x 81 (1676 x 914 x 2057)	66 x 36 x 81 (1676 x 914 x 2057)	66 x 36 x 81 (1676 x 914 x 2057)	66 x 36 x 81 (1676 x 914 x 2057)
Max. Pump Flow gpm (lpm)	60 (227)	60 (227)	60 (227)	60 (227)	60 (227)	60 (227)
Regulated Pump Flow gpm (lpm)	29 (110)	37 (140)	54 (204)	54 (204)	54 (204)	58 (220)
Pump Pressure psi (bar)	3600 (250)	3600 (250)	3600 (250)	3600 (250)	4200 (290)	4200 (290)
Pressure Filter Flow Capacity gpm (lpm)	60 (227)	100 (379)	147 (556)	147 (556)	147 (556)	147 (556)
Air-to-Oil Cooler ½ HP motor (56T frame)	c/w Optional	Standard	Standard	Standard	Standard	Standard



Filtration	Micron	Filtration Area sq. in. (sq. mm)	Flow Capacity gpm (lpm)	By-Pass psi (bar)	Maximum Pressure Rating psi (bar)
Pressure Filter	10	415 (2677)	varies - see chart above	75 (5)	5075 (350)
Return Filter	10	1100 (7100)	130 (490)	22 (1.5)	n/a
Suction Strainer	10	415 (2677)	60 (225)	75 (5)	6,000 (410)

Note: Power Pack Assembly also includes Pressurized reservoir capacity is 100 gal. (353 liters); Vent pressure relief is 4 psi (2.8 bar); Visual indicators provided on both pressure and return filters; low-oil level cut-off switch; pressurized filler cap., tank clean-out access cover; oil level gauge; temperature gauge; pump load sense bulkhead & connector, drain port & valve.

#### Power Pack Options

Oil Tank Immersion Heater c/w thermostat; High/Low Temperature Sensor; Motor Starter Panel; Recirculation Valve; High Altitude Provision; Motor Deration Package in 3,281 ft. (1000 meters); Drip tray; Hand pump; Motor Terminal Blocks; Water-over-Air Cooler pkg.; Cold Weather Conversion Kit

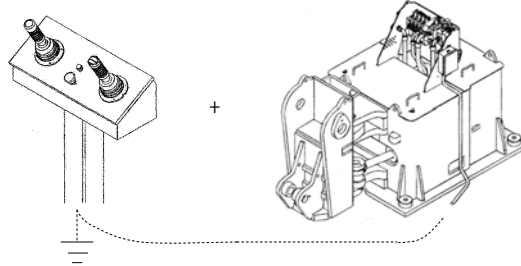
Electric Motor (C-Face Pump Drive)	50 HP	60 HP	100 HP	125 HP
TEFC (IP55) Frame Size High Efficiency Prem. Efficiency	326T	364/5T	404/5T	404/5T 444/5T
RPM / Service Factor	1800 / 1.25	1800 / 1.25	1800 / 1.25	1800 / 1.15
Efficiency & Power Factor @ 100%	94.5 / 84.0	95.0 / 87.0	95.4 / 87.0	95.8 / 88.0
AC Voltage / Phase / Hertz (other combinations available to suit site)	380 / 3 / 50 460 / 3 / 60 575 / 3 / 60	380 / 3 / 50 460 / 3 / 60 575 / 3 / 60	380 / 3 / 50 460 / 3 / 60 575 / 3 / 60	380 / 3 / 50 460 / 3 / 60 575 / 3 / 60
Current: Full Load / Locked Rotor (amps)	58.4 / 355	68.0 / 430	112 / 725	139 / 907
Torque: Full Load Torque ft-lb (N-m)	148 (201)	177 (240)	295 (400)	368 (499)

Note: NEMA Design B; Class "F" insulation; Altitude 3,300 ft. (1000 m) a.s.l.; Ball bearings; Continuous duty; Energy savings > EFF1 minimum efficiency (CC029A certification); Premium eff. meets IEEE841 standard

## Remote Controls

### Electro-Hydraulic Control Console

- Stand-mounted console – 48 in. (1219 mm) height
- 2-Dual Axis Joysticks – R.H. Thumb Hammer Op.
- SAE Mapping / Excavator Control Pattern
- Console On/Off Button
- Pedestal EHC Enclosure
- 30 ft. (9.1 m)\* cable
- Powered by local 110/115 VAC



### Additional Electro-Hydraulic Control Options

- Remote Control Panel for remote start/stop of power pack, c/w indicator switches / lamps
- Additional length remote control umbilical cable length > 30 ft. (9.1 m)  
(See distance options below)

### Control System Options

Portable Electric- Hydraulic Control	Radio Remote Control (transmitter & receiver system)	Manual Control Console	Ergonomics Operator's Seat c/w Electric-Hydraulic Control

### Distance Options ft. (m)

- Standard EHC configuration - 100 (30) to 200 (60)
- Deluxe EHC configuration - 200 (60) to 400 (120)
- Radio Remote option - 328 (30) max.
- Parker IQAN (can-bus) option - 328 (30) max.
- Coaxial Cable (Pan-Zoom Camera) option – 1,500 (457)
- Fiber Optics (Pan-Zoom Camera) option – 7 miles (11.2K m)



# MRH Series Pedestal Rock Breaker System

## ROCKBREAKER SYSTEM STANDARD FEATURES

Notes:

● Standard ▲ Optional

### Power Packs

- • 50 HP & 60 HP power pack for BX20 & BX30 respectively
- ▲ • 40 HP & 50 HP power pack for BX20 & BX30 respectively in lighter applications
- • High efficient grade main pump drive motor
- ▲ • Premium efficient (IEEE841) main pump drive motor (optional energy efficient)
- • Main electric motor altitude acceptance limit: 3,280 ft. (1000 m)
- ▲ • High Altitude: motor impeller charge kit > 5,000 ft (1,500 m); and
- ▲ • High Altitude: motor altitude deration, provided in 1000 m increments > 3,280 ft. (1000 m) up 16,400 ft. (5000 m)
- ▲ • Continuous oil circulation valve for high duty & temperature applications
- ▲ • High/low temperature sensor
- ▲ • Immersion heater – 2kW (circuit breaker & contactor optional with starter panel)
- ▲ • Motor Starter panel (40, 50, 60, 100 or 125 HP mounting & wiring also optional)
- ▲ • Remote power pack start / stop panel with indicator switches and lamps
- / ▲ • Air-to-oil Cooler (std. for BX30 & larger units; opt. for BX20 & smaller units)
- ▲ • Water-over-oil Cooler
- ▲ • Cold weather conversion kit (with dual immersion heaters, heat tape, etc.)
- / ▲ • 10 ft. (3 m) Supply hoses –optional longer lengths up to 25 ft. (7.6 m)

### Control System:

- • Stand-mounted electro-hydraulic joystick remote controller package
- ▲ • Portable electro-hydraulic remote joystick controller package
- ▲ • Secondary Stand-mounted electro-hydraulic remote joystick controller package
- ▲ • Hand-held Radio Remote (transmitter-receiver) joystick controller package
- ▲ • IQAN (can-bus) joystick controller package (override handles also optional)
- ▲ • 30 ft. (9.1 m) remote control cable
- ▲ • > 30 ft. (9.1 m) remote control cable – available up to 100 ft. (30 m)
- ▲ • 100 to 200 ft. (30 – 60 m) long distance cable
- ▲ • 200 to 400 ft. (60 – 80 m) long distance cable

### Greasing System: (2-grease system: moly / lithium for boom, chisel past for hammer)

- • Individual / point-to-point manual greasing of boom and hammer
- ▲ • Manual-Centralized Grease system; Hydraulic auto lubrication system
- ▲ • Pneumatic auto lubrication system

### Pedestal Boom and Hammer Units

- ▲ • Counter-balance valve package
- ▲ • Anti-Lunge provision
- ▲ • Anti-Blank fire provision
- ▲ • Fire suppression system (Ansul: manual, "Automan" or "Check-fire")
- • Hammer tool – choice of (blunt, chisel,moil; blunt std. on BX20 & larger hammers)
- ▲ • Hammer severe duty wear kit with rock claws (separate claws also optional)

# MRH Series Pedestal Rock Breaker System

## OPTIONS<sup>▲</sup>

### BOOM

- All hose system
- Counter balance valves
- Anti-lunge protection
- Anti-blank fire interlock
- Foundation interface mounting  
- concrete or steel structure
- Greasing systems  
- manual, hydraulic or pneumatic
- Fire Suppression (Ansul)
- Explosion proof valve/circuit
- Auxiliary hydraulic circuit
- Steel isolator mounting
- Expander pin provision\*
- Spring guard hose covering
- Start-up / commissioning svc.
- Installation supervision



(\*) Expander pin provision

### POWER PACK

- Immersion heater
- High/Low temperature sensor
- Continuous circulation valve
- Premium efficient motor
- Motor Starter Panel  
- additional mounting & wiring
- Cooler Package (for BX20)  
- air-to-oil or water-to-oil
- Cold weather conversion kits
- High altitude provision
- Motor deration package
- Motor terminal blocks
- Explosion proof motor
- Hand pump
- Drip tray
- Dust enclosure w/ ventilation

### CONTROLS

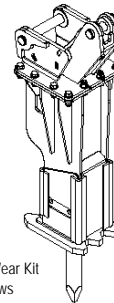
- Radio remote controls
- Portable remote controller
- Remote mechanical controls
- Remote starter panel
- Secondary remote controller  
- stand or portable
- Longer remote cables  
- standard / deluxe cabling
- IQAN\* (can bus) control system
- Ergonomic chair c/w controls
- Coaxial cable system
- Fiber optics system



(\*) IQAN (can-bus)  
control system

### HAMMER

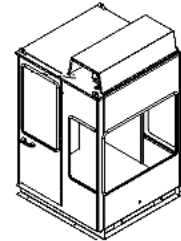
- Severe duty wear kit\*
- Rock claws kit\*
- Mechanic quick coupler
- Concave removal tool
- Spare Tools  
- blunt, chisel,moil
- Chisel paste  
- single tube or case or 5 gal. pail
- Extension mounting bracket



(\*) Severe Duty Wear Kit  
c/w Rock Claws

### MISCELLANEOUS

- 18 in (472 mm) bucket
- Quick Coupler-bucket
- Hydraulic positioner & circuit
- Control cabin (medium or large)
- Control cabin options  
- a/c; heater; add'l door/window; etc.
- Miscellaneous attachments:  
- picks, grapples, stone grabs



(\*) Control Cab  
c/w A/C

A BTI representative is available to review your rock breaker project requirements and provide a site visit and assessment of your material flow conditions. BTI has a policy of continuous product improvement and reserves the right to revise or change designs and specifications at any time without obligation.

Authorized Dealer



**BREAKER TECHNOLOGY** an Astec Industries Company

UNITED STATES EAST 440.248.7168 • UNITED STATES WEST 951.369.0878 • CANADA/INTERNATIONAL 519.599.2015 • rockbreaker.com





## Rockbreaker Boom Systems Warranty Policy

REV 09/04

# WARRANTY POLICY

1. BREAKER TECHNOLOGY INC. Company (hereinafter referred to as "BTI") warrants this product against defects in materials and workmanship for a period of twelve (12) months or 2000 hours from the date of installation, or 18 months from the date of shipment, whichever comes first. This warranty does not cover o-rings, seals, fittings, hoses, breaker tools or other items considered normal wear items. These are covered by the Limited Warranty period of thirty (30) days. Warranty for propriety items such as valves, pumps, filters, electric motors, panels and componentry that are not manufactured by BTI, will be governed by the warranty terms of their manufacturer. This warranty is void if BTI's standard installation specifications and procedures are not adhered to.
2. BTI will authorize return of any defective components or sufficient evidence of such defect to a BTI warehouse. Such components or such evidence must clearly show that the defect was caused by faulty material or poor workmanship. Warranty claim will be accepted only if it is submitted on a proper claims form with proof of purchase and received within sixty (60) days from the date of discovery of the defect. Warranty claims will be considered only if the "Installation Notice" has been duly filled in and returned to BTI within thirty (30) days from the date of installation.
3. BTI will at it's option, repair or refurbish the defective part(s) without charge to the initial user or may elect to issue full or partial credit toward the purchase of a new part(s). The extent of credit issued, which will be in the form of a "Credit Memo", will be determined by pro-rating against the normal life of the part(s) in question.
4. BTI is not responsible for mileage, travel time, travel expenses, overtime labor, and any freight expenses required to facilitate the repair.
5. This warranty does not apply if the product has been damaged by accident, abuse, misuse, misapplication or neglect, or as a result of service, disassembly or modification, without BTI's express authorization.
6. BTI assumes no liability beyond the replacement of defective parts or materials and/or the correction of such defective parts or materials.
7. BTI neither assumes nor authorizes any other person to assume for it any liability in connection with the sale of its products other than that specifically stated herein.
8. THIS WARRANTY IS EXPRESSLY IN LIEU OF ANY AND ALL OTHER WARRANTIES. EXCEPT AS EXPRESSLY SET FORTH HEREIN, BTI MAKES NO REPRESENTATION OR WARRANTY, STATUTORY, EXPRESS OR IMPLIED, WITH RESPECT TO THE PRODUCTS MANUFACTURED AND/OR SUPPLIED BY BTI, WHETHER AS TO MERCHANTABILITY, FITNESS FOR A PARTICULAR PURPOSE OR ANY OTHER MATTER. IN NO EVENT, INCLUDING IN THE CASE OF A CLAIM OF NEGLIGENCE, SHALL BTI BE LIABLE FOR INCIDENTAL OR CONSEQUENTIAL DAMAGES.

[www.rockbreaker.com](http://www.rockbreaker.com)

**Breaker Technology, Inc.**  
30625 Solon Industrial Pkwy.  
Solon, Ohio 44139 USA  
(440) 248-7168 / 8645 Ph. / Fx.

**Breaker Technology, Inc.**  
3453 Durahart Street  
Riverside, CA 92507  
(951) 369-0878 / 8281 Ph. / Fx.

**Breaker Technology Ltd.**  
35 Elgin Street North  
Thornbury, Ontario N0H 2P0  
(519) 599-2015 / 6803 Ph. / Fx.

**BREAKER TECHNOLOGY** an Astec Industries Company



UNITED STATES EAST 440.248.7168 • UNITED STATES WEST 951.369.0878 • CANADA/INTERNATIONAL 519.599.2015 • [rockbreaker.com](http://rockbreaker.com)