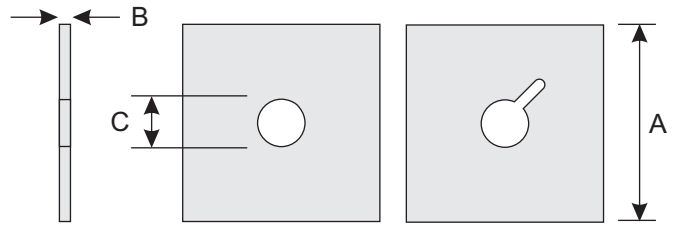


Bearing Plates (washers)

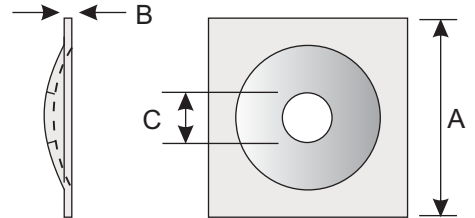
FLAT PLATE - for general use

- minimum A-36 material (36,000 psi yield)
- A = 4" to 12" square
- B = 1/8" to 1-1/2" thick
- C = hole diameter as required
- bent corner, grout slots & keyholes available



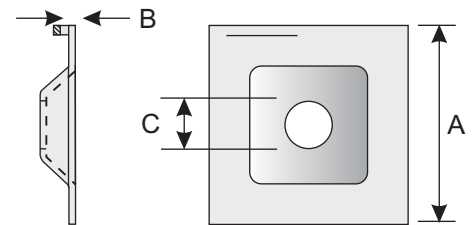
DOMED PLATE - use with anchornuts, cable grips or spherical seat washers

- minimum A-36 material (36,000 psi yield)
- A = 6", 8" and 12" square
- B = 1/4" or 3/8" thick
- C = hole diameter as required



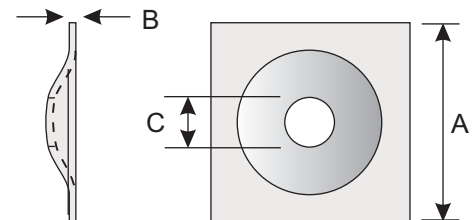
SPLIT SET™ PLATE - for use with friction stabilizers

- minimum A-36 material (36,000 psi yield)
- A = 6" square
- B = SS-33 & SS-39: 3/16" thick; SS-46: 1/4" thick
- C = SS-33: 36mm (1-7/16") diameter
SS-39: 41mm (1-5/8") diameter
SS-46: 48mm (1-7/8") diameter



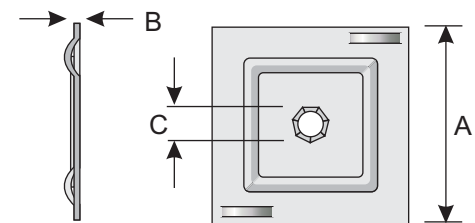
T-DOME PLATE - for use with T-Dome Rockbolts

- minimum A-36 material (36,000 psi yield)
- A = 4", 5", & 6" square
- B = 1/4" thick
- C = 7/8" diameter



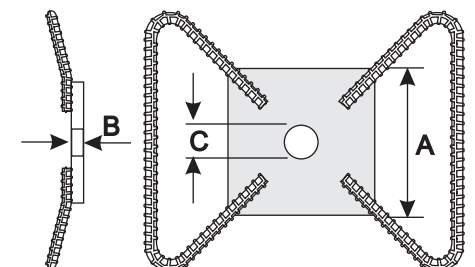
PUSH-ON-PLATE - for installing screen/mesh

- heat treated to HRC 45 minimum
- A = 5" square
- B = 0.068" thick
- C = 5/8", 3/4" and 7/8" available
- magnetic installation tool available



SHOTCRETE (SPIDER) PLATE - for use with shotcrete

- minimum A-36 material (36,000 psi yield)
- A = 5" & 6" square
- B = 1/4" and 3/8" thick
- C = 1.2" diameter
- overall size 10" x 12" including #3 rebar "spiders"



Plates meet or exceed ASTM F432 specifications for deflection
Custom sizes and/or galvanizing available upon request